

Table of contents

- **BF40E**
- **BF40EIK**
- **BF40M**
- **BF40MDK**
- **BF40MIK**
- **BF40MOK**
- **BF80E**
- **Motors for BF40**
- **Motors for BF80**
- **Belts**
- **Belt Profiles**
- **Tracking Guides**
- **Conveyor Stands**
- **Conveyor Guides**
- **Conveyor Belt Covers**
- **Support Kits**

BF40E

This is a selection of BF40E standard conveyor sizes.
Given speeds are based on using an MS63B-4 with the appropriate SB030 gear.

Recommended max. load 75 kg. The recommended max load is evenly spread over the entire conveyor and is in relation to a nominal width and length.

Dimensions in mm.

For other dimensions please contact Rollco.

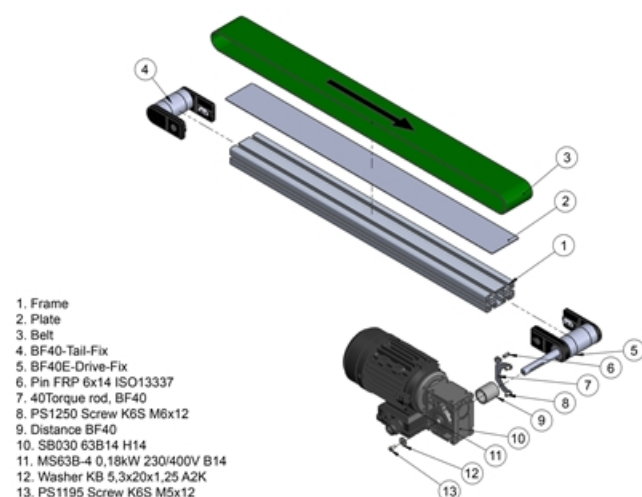
Length (mm): Up to 4000

Gear ratio (I): 5 / 7.5 / 10 / 15 / 20 / 25 / 30 / 40 / 50

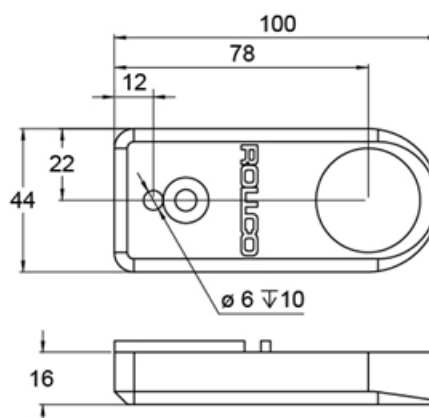
Speed (m/min): 37 (37.3) / 25 (24.9) / 19 (18.7) / 12 (12.4) / 9 (9.4) / 8 (7.5) / 6 (6.2) / 5 (4.7) / 4 (3.7)

Drive side: Right/left

Motor Position: Horizontal/vertical — 1-4

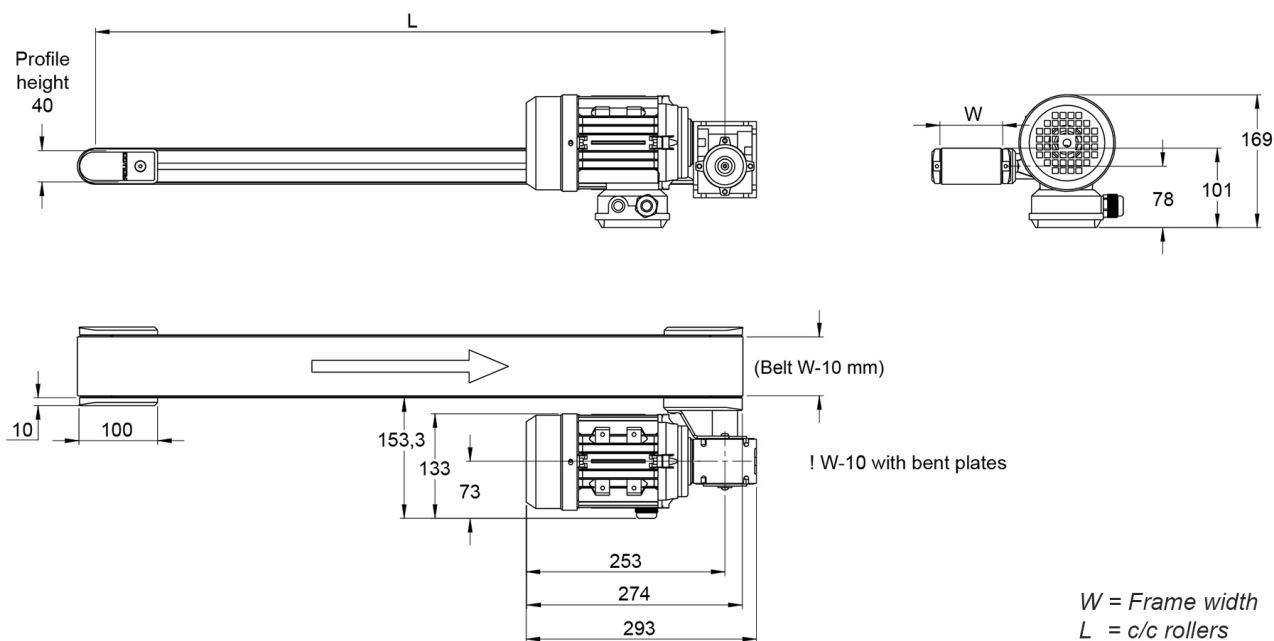


BF40E Drive holder



Gear ratio (I)	Speed (m/min)
5	37 (37,3)
7,5	25 (24,9)
10	19 (18,7)
15	12 (12,4)
20	9 (9,4)
25	8 (7,5)
30	6 (6,2)
40	5 (4,7)
50	4 (3,7)

General Data



Designation	Width (mm)
BF40E - 40	40
BF40E - 80	80
BF40E - 120	120
BF40E - 160	160
BF40E - 200	200
BF40E - 250	250
BF40E - 300	300
BF40E - 350	350
BF40E - 400	400

BF40EIK

This is a selection of BF40EIK standard conveyor sizes. Given speeds are based on using an MS63B-4 with the appropriate SB030 gear.

Recommended max. load 75 kg. The recommended max load is evenly spread over the entire conveyor and is in relation to a nominal width and length.

Dimensions in mm.

For other dimensions please contact Rollco.

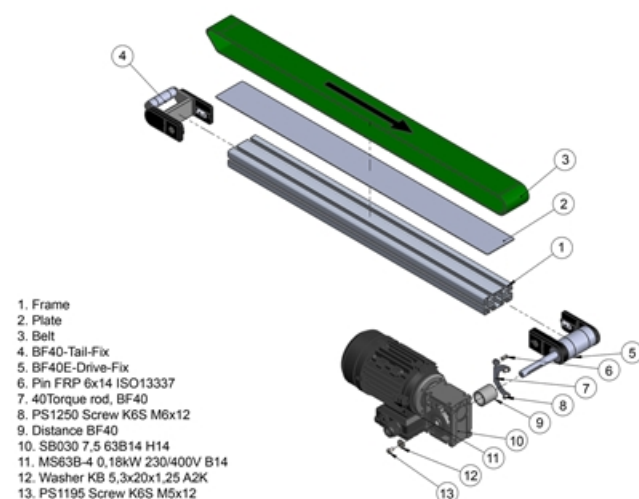
Length (mm): Up to 4000

Gear ratio (I): 5 / 7.5 / 10 / 15 / 20 / 25 / 30 / 40 / 50

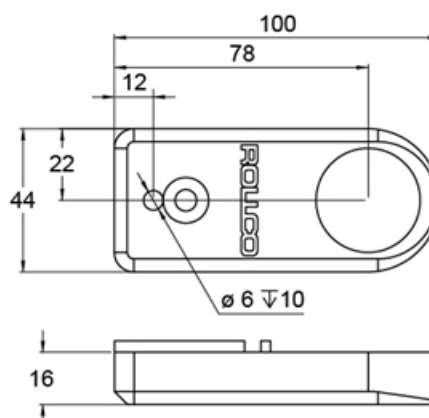
Speed (m/min): 37 (37.3) / 25 (24.9) / 19 (18.7) / 12 (12.4) / 9 (9.4) / 8 (7.5) / 6 (6.2) / 5 (4.7) / 4 (3.7)

Drive side: Right/left

Motor Position: Horizontal/vertical — 1-4

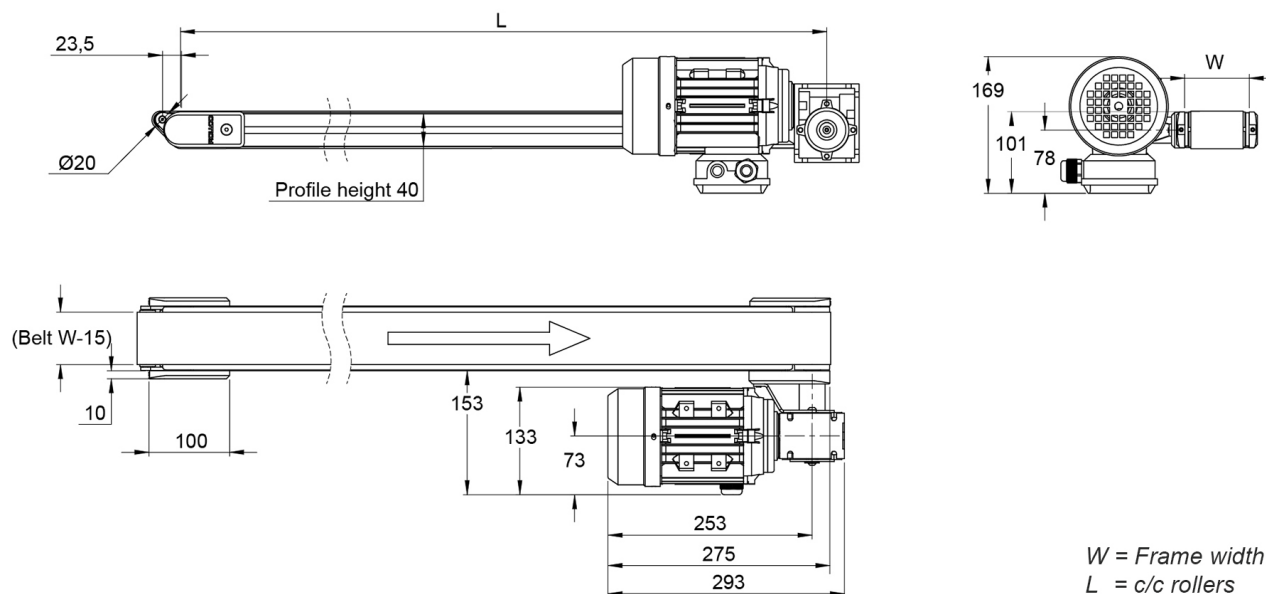


BF40E Drive holder



Gear ratio (I)	Speed (m/min)
5	37 (37,3)
7,5	25 (24,9)
10	19 (18,7)
15	12 (12,4)
20	9 (9,4)
25	8 (7,5)
30	6 (6,2)
40	5 (4,7)
50	4 (3,7)

General Data



Designation	Width (mm)
BF40EIK - 40	40
BF40EIK - 80	80
BF40EIK - 120	120
BF40EIK - 160	160
BF40EIK - 200	200
BF40EIK - 250	250
BF40EIK - 300	300
BF40EIK - 350	350
BF40EIK - 400	400

BF40M

This is a selection of BF40M standard conveyor sizes.
Given speeds are based on using an MS63B-4 with the appropriate SB030 gear.

Recommended max. load 75 kg. The recommended max load is evenly spread over the entire conveyor and is in relation to a nominal width and length.

Dimensions in mm.

For other dimensions please contact Rollco.

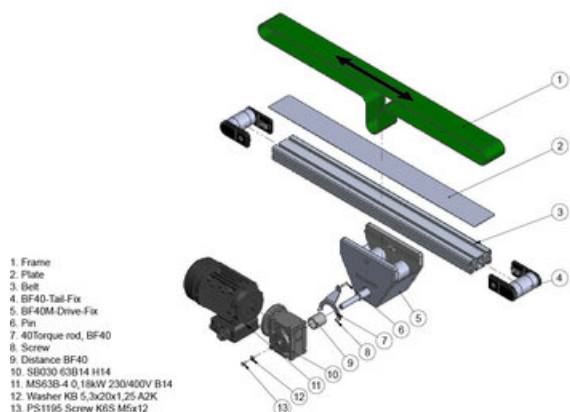
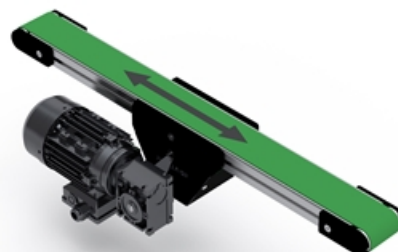
Length (mm): Up to 4000

Gear ratio (I): 5 / 7.5 / 10 / 15 / 20 / 25 / 30 / 40 / 50

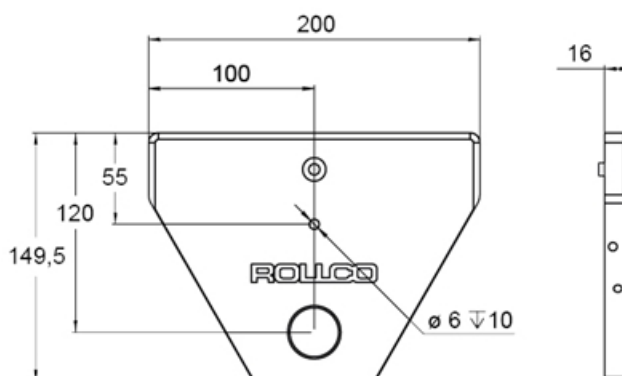
Speed (m/min): 37 (37.3) / 25 (24.9) / 19 (18.7) / 12 (12.4) / 9 (9.4) / 8 (7.5) / 6 (6.2) / 5 (4.7) / 4 (3.7)

Drive side: Right/left

Motor Position: Horizontal/vertical — 1-4

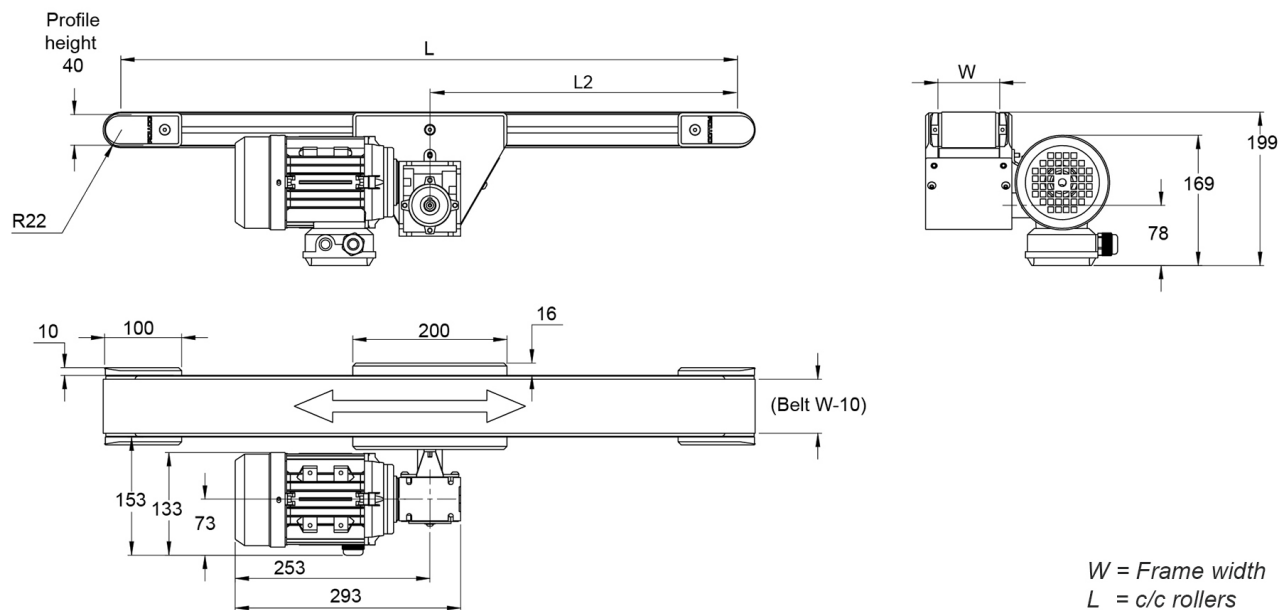


BF40M Drive holder



Gear ratio (I)	Speed (m/min)
5	37 (37,3)
7,5	25 (24,9)
10	19 (18,7)
15	12 (12,4)
20	9 (9,4)
25	8 (7,5)
30	6 (6,2)
40	5 (4,7)
50	4 (3,7)

General Data



Designation	Width (mm)
BF40M - 40	40
BF40M - 80	80
BF40M - 120	120
BF40M - 160	160
BF40M - 200	200
BF40M - 250	250
BF40M - 300	300
BF40M - 350	350
BF40M - 400	400

BF40MDK

This is a selection of BF40MDK standard conveyor sizes. Given speeds are based on using an MS63B-4 with the appropriate SB030 gear.

Recommended max. load 75 kg. The recommended max load is evenly spread over the entire conveyor and is in relation to a nominal width and length.

Dimensions in mm.

For other dimensions please contact Rollco.

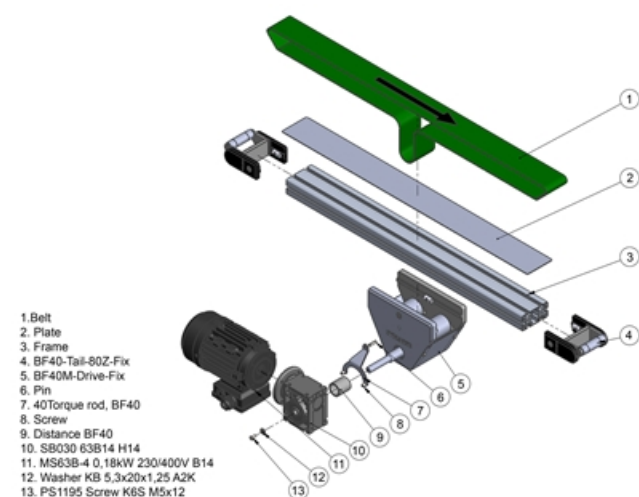
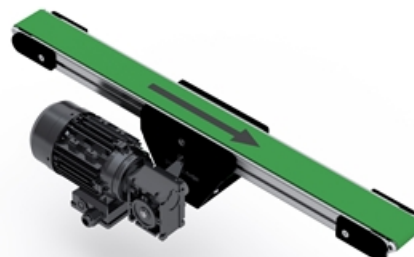
Length (mm): Up to 4000

Gear ratio (I): 5 / 7.5 / 10 / 15 / 20 / 25 / 30 / 40 / 50

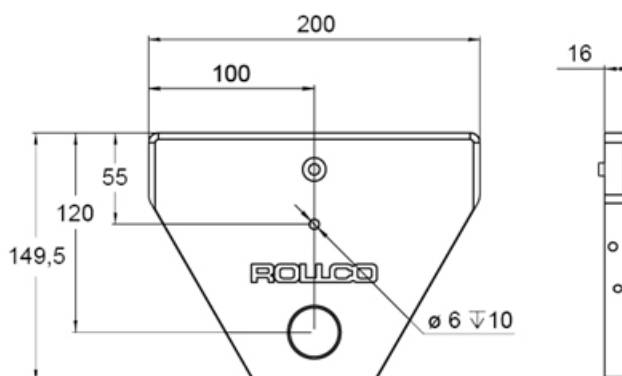
Speed (m/min): 37 (37.3) / 25 (24.9) / 19 (18.7) / 12 (12.4) / 9 (9.4) / 8 (7.5) / 6 (6.2) / 5 (4.7) / 4 (3.7)

Drive side: Right/left

Motor Position: Horizontal/vertical — 1-4

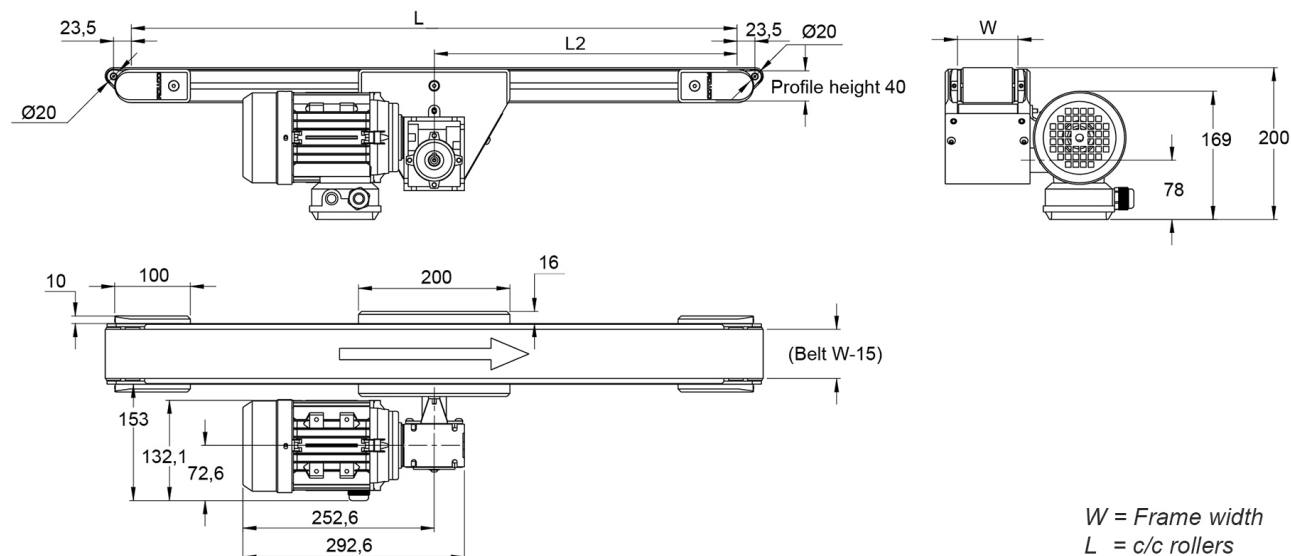


BF40M Drive holder



Gear ratio (I)	Speed (m/min)
5	37 (37,3)
7,5	25 (24,9)
10	19 (18,7)
15	12 (12,4)
20	9 (9,4)
25	8 (7,5)
30	6 (6,2)
40	5 (4,7)
50	4 (3,7)

General Data



Designation	Width (mm)
BF40MDK - 40	40
BF40MDK - 80	80
BF40MDK - 120	120
BF40MDK - 160	160
BF40MDK - 200	200
BF40MDK - 250	250
BF40MDK - 300	300
BF40MDK - 350	350
BF40MDK - 400	400

BF40MIK

This is a selection of BF40MIK standard conveyor sizes. Given speeds are based on using an MS63B-4 with the appropriate SB030 gear.

Recommended max. load 75 kg. The recommended max load is evenly spread over the entire conveyor and is in relation to a nominal width and length.

Dimensions in mm.

For other dimensions please contact Rollco.

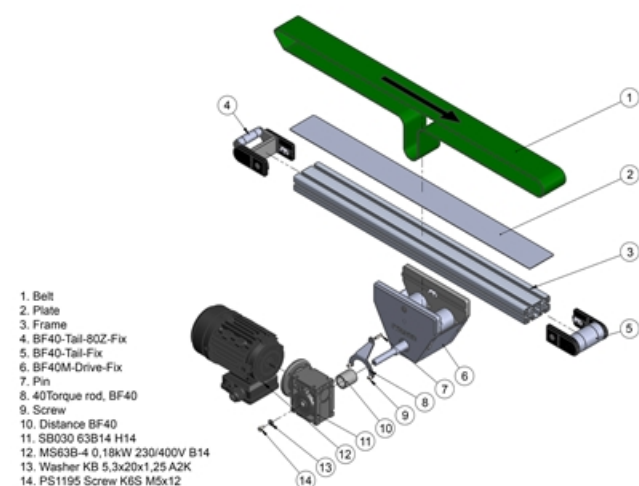
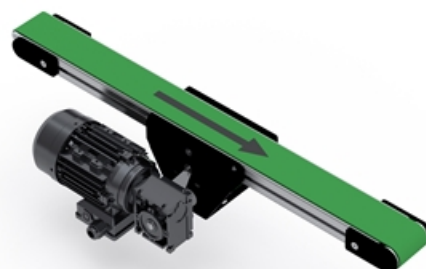
Length (mm): Up to 4000

Gear ratio (I): 5 / 7.5 / 10 / 15 / 20 / 25 / 30 / 40 / 50

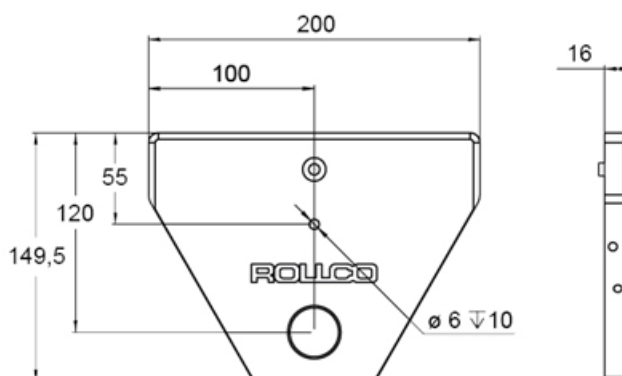
Speed (m/min): 37 (37.3) / 25 (24.9) / 19 (18.7) / 12 (12.4) / 9 (9.4) / 8 (7.5) / 6 (6.2) / 5 (4.7) / 4 (3.7)

Drive side: Right/left

Motor Position: Horizontal/vertical — 1-4

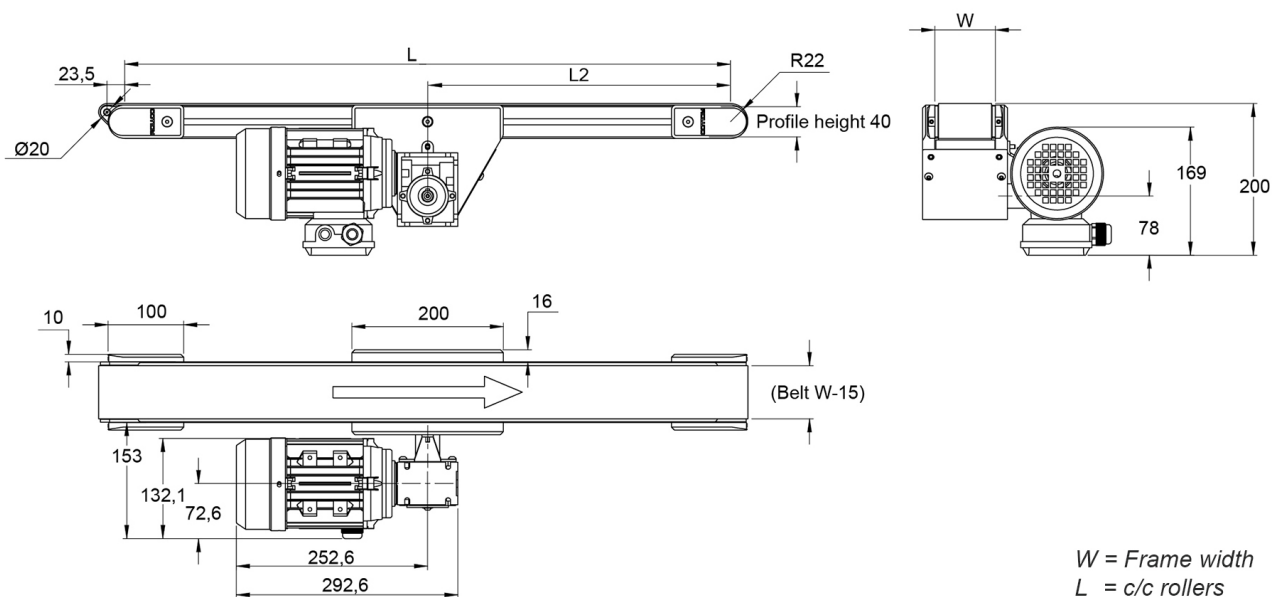


BF40M Drive holder



Gear ratio (I)	Speed (m/min)
5	37 (37,3)
7,5	25 (24,9)
10	19 (18,7)
15	12 (12,4)
20	9 (9,4)
25	8 (7,5)
30	6 (6,2)
40	5 (4,7)
50	4 (3,7)

General Data



Designation	Width (mm)
BF40MIK - 40	40
BF40MIK - 80	80
BF40MIK - 120	120
BF40MIK - 160	160
BF40MIK - 200	200
BF40MIK - 250	250
BF40MIK - 300	300
BF40MIK - 350	350
BF40MIK - 400	400

BF40MOK

This is a selection of BF40MOK standard conveyor sizes. Given speeds are based on using an MS63B-4 with the appropriate SB030 gear.

Recommended max. load 75 kg. The recommended max load is evenly spread over the entire conveyor and is in relation to a nominal width and length.

Dimensions in mm.

For other dimensions please contact Rollco.

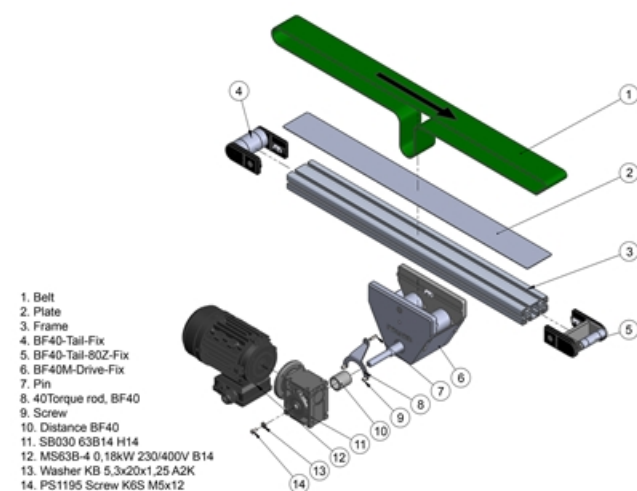
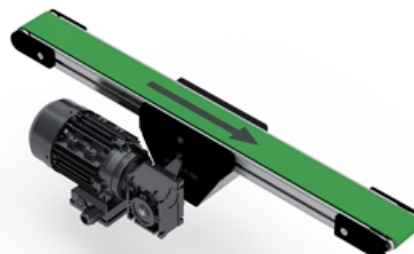
Length (mm): Up to 4000

Gear ratio (I): 5 / 7.5 / 10 / 15 / 20 / 25 / 30 / 40 / 50

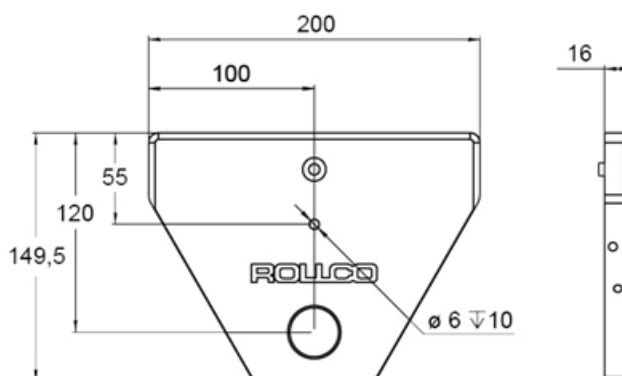
Speed (m/min): 37 (37.3) / 25 (24.9) / 19 (18.7) / 12 (12.4) / 9 (9.4) / 8 (7.5) / 6 (6.2) / 5 (4.7) / 4 (3.7)

Drive side: Right/left

Motor Position: Horizontal/vertical — 1-4

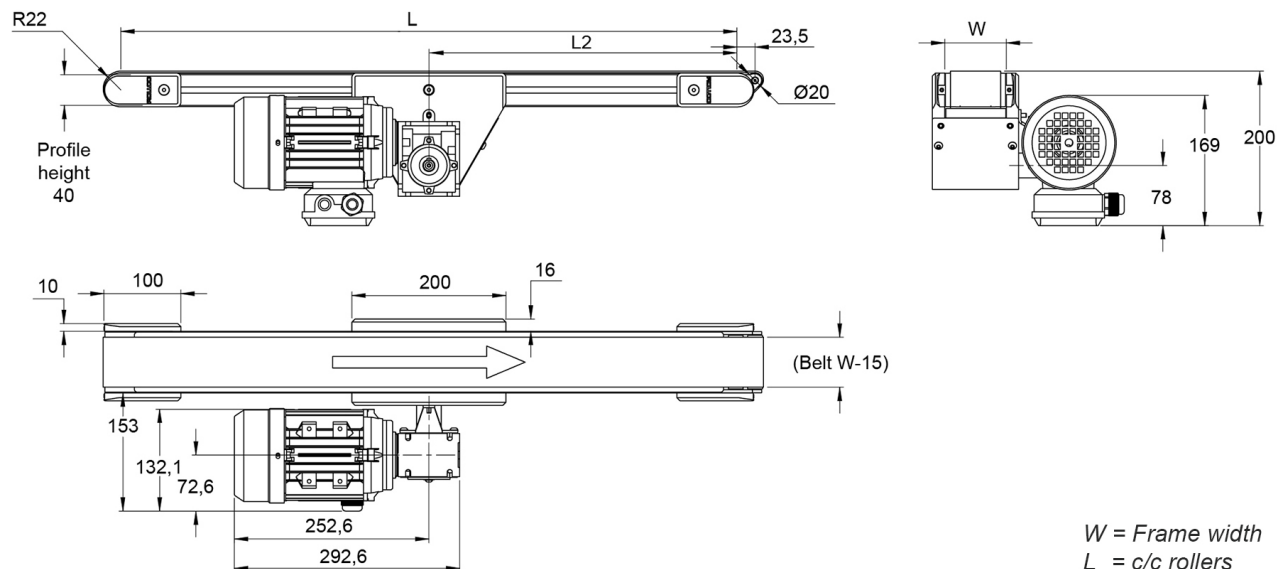


BF40M Drive holder



Gear ratio (I)	Speed (m/min)
5	37 (37,3)
7,5	25 (24,9)
10	19 (18,7)
15	12 (12,4)
20	9 (9,4)
25	8 (7,5)
30	6 (6,2)
40	5 (4,7)
50	4 (3,7)

General Data



Designation	Width (mm)
BF40MOK - 40	40
BF40MOK - 80	80
BF40MOK - 120	120
BF40MOK - 160	160
BF40MOK - 200	200
BF40MOK - 250	250
BF40MOK - 300	300
BF40MOK - 350	350
BF40MOK - 400	400

BF80E

This table shows a selection of BF80E standard conveyor sizes. Given speeds are based on using an MS71A-4 with the appropriate SB050 gear.

Recommended max. load 150 kg. The recommended max load is evenly spread over the entire conveyor and is in relation to a nominal width and length.

Dimensions in mm.

For other dimensions please contact Rollco.

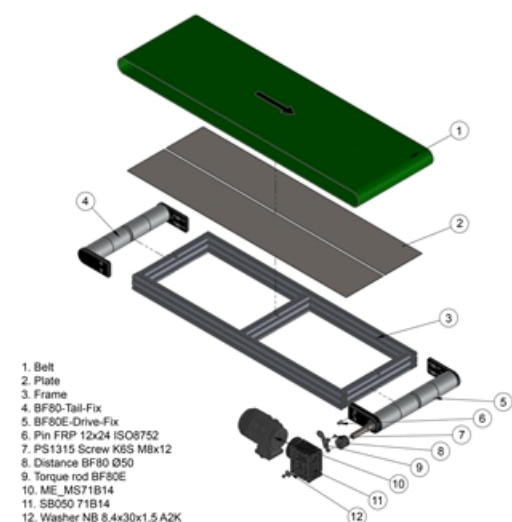
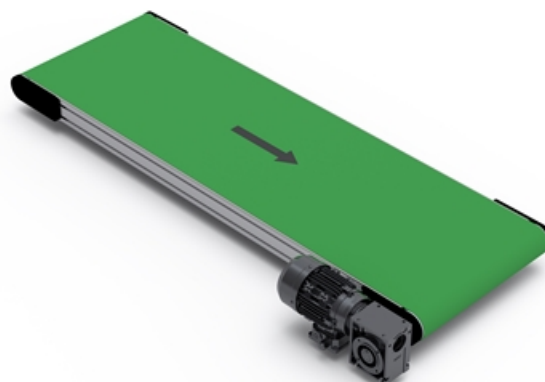
Length (mm): Up to 6000

Gear ratio (I): 10 / 15 / 20 / 25 / 30 / 40 / 50 / 60 / 80 / 100

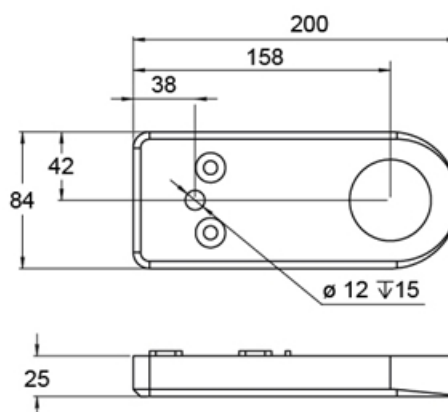
Speed (m/min): 36 (36.2) / 24 (24.3) / 18 (18.2) / 15 (14.5) / 12 (12.2) / 9 (9.3) / 7 (7.4) / 6 (6.1) / 5 (4.5) / 4 (3.7)

Drive side: Right/left

Motor Position: Horizontal/vertical — 1-4

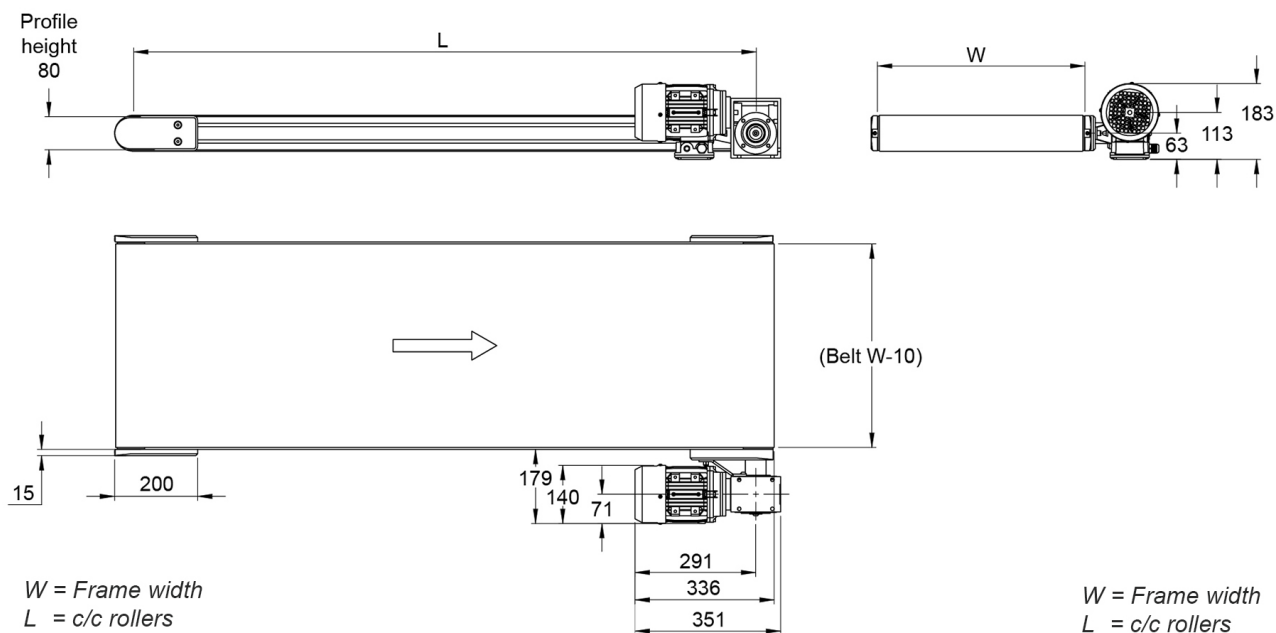


BF80E Drive holder



Gear ratio (I)	Speed (m/min)
10	36 (36,2)
15	24 (24,3)
20	18 (18,2)
25	15 (14,5)
30	12 (12,2)
40	9 (9,3)
50	7 (7,4)
60	6 (6,1)
80	5 (4,5)
100	4 (3,7)

General Data



Designation	Width (mm)
BF80E - 500	500
BF80E - 600	600
BF80E - 700	700
BF80E - 800	800
BF80E - 900	900
BF80E - 1000	1000

Motors for BF40

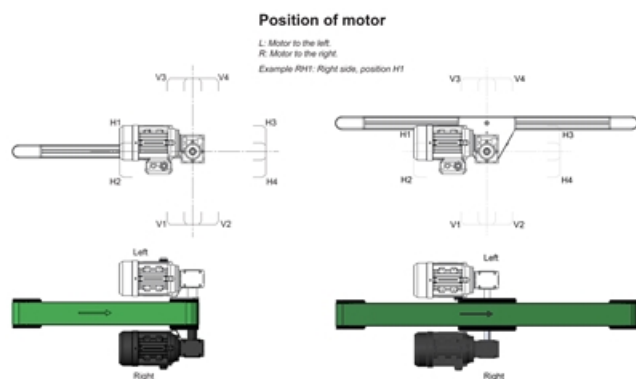
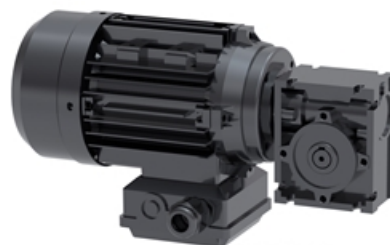
This is a selection of standard motors available for our BF40 series.

We can customise the drive shaft to accommodate many different motors and gear choices. Please contact Rollco for more information.

Dimensions in mm.

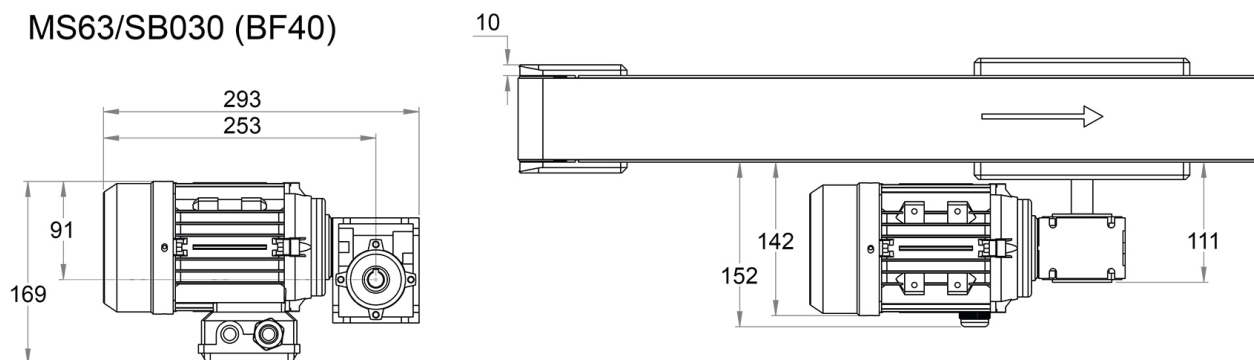
NOTE!

Other motors and frequency converters are available on request. Individual motors are not tested. Motors and gears are not assembled to the unit.



General Data

MS63/SB030 (BF40)



Designation	Voltage (V)	Power (kW)	Frequency (Hz)	Current (A)	Speed (rpm)
MS63A-4	230/400	0.12	50	0.82 / 0.47	1350
MS63B-4	230/400	0.18	50	1.18 / 0.68	1350
MS63C-4	230/400	0.25	50	1.58 / 0.91	1340
ML63B-4	230/400	0.18	50	1.36	1340

Designation	Protection Class	Phase	Code
MS63A-4	IP55	3	1
MS63B-4	IP55	3	2
MS63C-4	IP55	3	3
ML63B-4	IP55	1	4

Motors for BF80

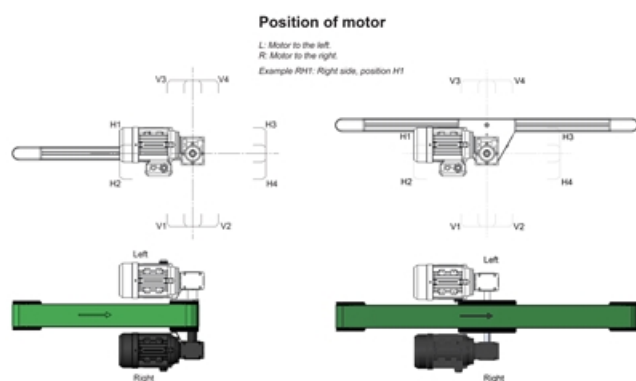
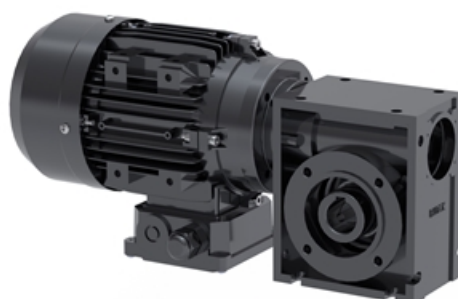
This is a selection of standard motors available for our BF80 series.

We can customise the drive shaft to accommodate many different motors and gear choices. Please contact Rollco for more information.

Dimensions in mm.

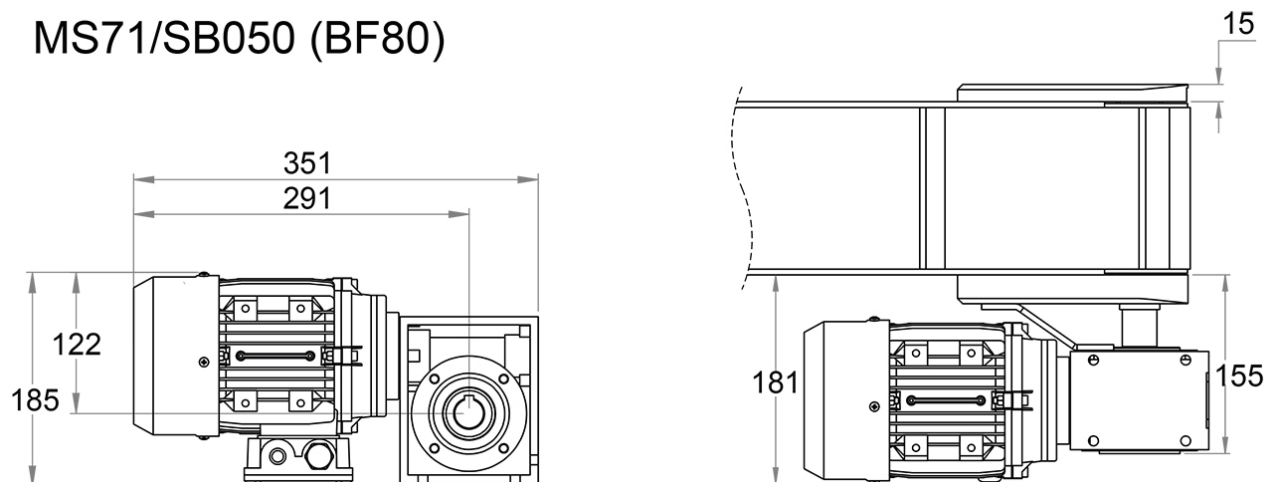
NOTE!

Other motors and frequency converters are available on request. Individual motors are not tested. Motors and gears are not assembled to the unit.



General Data

MS71/SB050 (BF80)



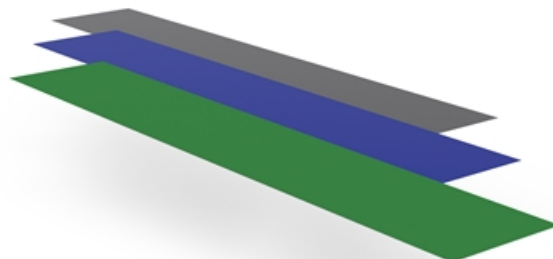
Designation	Voltage (V)	Power (kW)	Frequency (Hz)	Current (A)	Speed (rpm)
MS71A-4	230/400	0.25	50	1.46 / 0.84	1350
MS71B-4	230/400	0.37	50	1.93 / 1.11	1370
MS80A-4	230/400	0.55	50	2.75 / 1.58	1370
MS63B-4	230/400	0.18	50	1.1 / 0.63	1365

Designation	Protection Class	Code
MS71A-4	IP55	5
MS71B-4	IP55	6
MS80A-4	IP55	7
MS63B-4	IP55	8

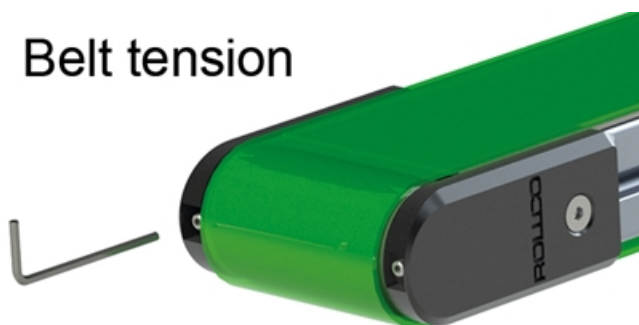
Belts

These are our standard belts. For specialized belts please contact us, as we have more options available to cover requirements from most industries.

Belt tension is easily adjusted with open screws on the head/tail pulleys.



Belt tension



General Data

Designation	Material	Friction	Colour	FDA	Surface
V	PVC	High	Green	No	Smooth coated
VT	PVC	High	Black	No	Grip top (tacks)
VG	PVC	High	Black	No	Longitudinal grooves
VQ	PVC	High	Grey	No	Quadri-le structure
VMFW	PVC	Medium	White	Yes	Smooth coated
VMFB	PVC	Medium	Blue	Yes	Smooth coated
VL	PVC	Low	Black	No	Smooth coated
VLGr	PVC	Low	Grey	No	Smooth coated
TF	TPU	High	Blue	Yes	Longitudinal grooves
TMF	TPU	Medium	White	Yes	Smooth coated
TL	TPU	Low	Black	No	Smooth coated
TLI	TPU	Low	Grey	No	Smooth impregnated
TLF5B	TPU	Low	Blue	Yes	Smooth coated
TLF8W	TPU	Low	White	Yes	Smooth coated
TLF	TPU	Low	Green	Yes	Smooth coated
Fle	PET	Medium	Grey	No	Impregnated fleece
PLI	PET	Low	Black	No	Smooth impregnated
PLIF	PET	Low	Grey (translucent)	Yes	Smooth impregnated
SiF	SI	High	White	Yes	Smooth coated
TLFH	TPU	Low	Green	Yes	Smooth coated
TMH	TPU	Medium	Green	No	Smooth coated
EGH	EPDM (rubber)	High	Green	No	Longitudinal grooves
NTH	NBR (rubber)	High	Green	No	Grip top (tacks)
NRH	NBR (rubber)	High	Green	No	Rough top
NMH	NBR (rubber)	Medium	Green	No	Smooth coated
NRMH	NBR (rubber)	Medium	Green	No	Fine rough top

Designation	Resistance	Typical applications
V	-	Furniture, Packaging, Plastic, Wood
VT	Abrasion	Furniture, Packaging, Plastic
VG	-	Canning, Distribution, Material handling
VQ	-	Postal sorting, Material handling
VMFW	Abrasion, Oil, Fat	"Food Processing; Fish, Meat, Poultry"
VMFB	Abrasion, Oil, Fat	"Food Processing; Fish, Meat, Poultry"

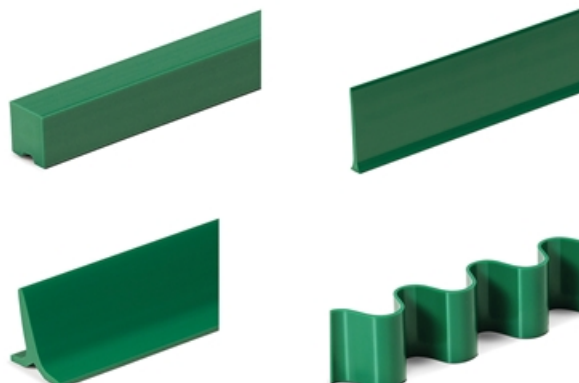
General Data

Designation	Resistance	Typical applications
VL	Abrasion, Noise	Distribution, Materials handling, Packaging
VLGr	-	Distribution, Materials handling, Packaging
TF	Abrasion, Oil, Fat	Bakery, Cheese, Chocolate, Fish, Meat, Poultry
TMF	High temp, Easy cleaning	Bakery, Cheese, Chocolate, Fish, Meat, Poultry
TL	Abrasion, Non-marking	Check-out, Inspection control
TLI	Abrasion	Yarn processing
TLF5B	Abrasion, Wear, Stick, Oil, Fat, 100°	Baby food, Bakery, Cereal, Cheese, Chocolate, Pizza
TLF8W	Abrasion, Wear, Stick, 100°	Bakery, Cereal, Pasta, Pizza, Sweets, Chewing gum
TLF	Abrasion, non-marking	Food processing, mini conveyors
Fle	Abrasion, Chemical, Cut, Impact, Wear, Noise, Fray, Oil, Solvent, Water	Airport baggage, Aluminium, Car parts, Cardboard, Electronics, Metal, Plywood, Plastic
PLI	Abrasion	Discharging belt, Line, Packaging
PLIF	Stick-slip	Bakery, Chemicals, Chocolate, Dough
SiF	UV	Bakery, Chemical, Chocolate, Frozen Foods
TLFH	Cut, Oil	Mini-conveyors, Apparatus Engineering, Metal working
TMH	Abrasion, Oil	Metal working, Packaging, Z-conveyors
EGH	Temperature variation	Packaging, Paper, Manufacturing, Processing, Wood
NTH	Oil, Chemical, Abrasion	Paper, Manufacturing, Processing, Wood
NRH	Oil, Chemical, Abrasion	"Packaging, Paper; Manufacturing, Processing"
NMH	Oil, Chemical	Paper, Printing, Finishing
NRMH	Abrasion	Paper, Manufacturing, Processing, Printing, Finishing

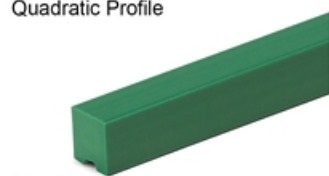
Belt Profiles

Please be aware that the material of the profiles must be the same as the chosen belt.

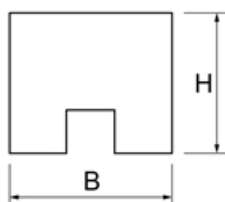
Dimensions in mm.



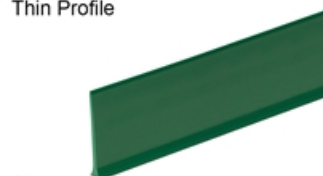
Quadratic Profile



© Habasit



Thin Profile



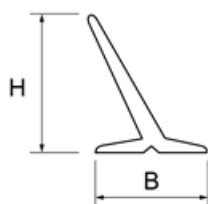
© Habasit



Wide Angled Profile



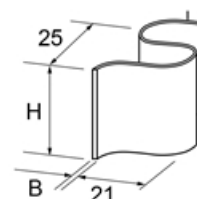
© Habasit



Side Walls



© Habasit



General Data

Designation	Code	Compatible with	Material	Colour	FDA
Quadratic TPU 4	1	BF40E & BF80E	TPU	Green/White	Yes
Quadratic TPU 8	1	BF40E & BF80E	TPU	Green/White	Yes
Quadratic TPU 12	1	BF80E	TPU	Green/White	Yes
Quadratic TPU 16	1	BF80E	TPU	Green/White	Yes
Quadratic PVC 4	1	BF40E & BF80E	PVC	Green/Grey	Available (E-PQ-R)
Quadratic PVC 8	1	BF40E & BF80E	PVC	Green/Grey	Available (E-PQ-R)
Quadratic PVC 12	1	BF80E	PVC	Green/Grey	Available (E-PQ-R)
Quadratic PVC 16	1	BF80E	PVC	Green/Grey	Available (E-PQ-R)
Thin 20	2	BF40E & BF80E	TPU	Green/Blue/White	Yes
Thin 30	2	BF40E & BF80E	TPU	Green/Blue/White	Yes
Thin 40	2	BF40E & BF80E	TPU	Green/Blue/White	Yes
Thin 60	2	BF40E & BF80E	TPU	Green/Blue/White	Yes
Thin 80	2	BF40E & BF80E	TPU	Green/Blue/White	Yes
Wide angled TPU 20	3	BF80E	TPU	Green/White	Yes
Wide angled TPU 30	3	BF80E	TPU	Green/White	Yes
Wide angled PVC 20	3	BF80E	PVC	Green/White	Available (E-PQ-R)
Wide angled PVC 30	3	BF80E	PVC	Green/White	Available (E-PQ-R)
Side walls 20	4	BF40E & BF80E	TPU	Green/White	Yes
Side walls 30	4	BF40E & BF80E	TPU	Green/White	Yes
Side walls 40	4	BF80E	TPU	Green/White	Yes
Side walls 50	4	BF80E	TPU	Green/White	Yes

Designation	B	H
Quadratic TPU 4	8	4
Quadratic TPU 8	8	8
Quadratic TPU 12	12	12
Quadratic TPU 16	12	16
Quadratic PVC 4	8	4
Quadratic PVC 8	8	8
Quadratic PVC 12	12	12
Quadratic PVC 16	12	16
Thin 20	10.5	20
Thin 30	10.5	30
Thin 40	10.5	40
Thin 60	10.5	60
Thin 80	10.5	80
Wide angled TPU 20	20	20
Wide angled TPU 30	30	30
Wide angled PVC 20	20	20
Wide angled PVC 30	30	30
Side walls 20	1.4	20

General Data

Designation	B	H
Side walls 30	1.4	30
Side walls 40	1.4	40
Side walls 50	1.4	50

Tracking Guides

This profile is used as a tracking guide. It is longitudinally applied on the running side of a belt, mainly in applications where transversal forces occur.

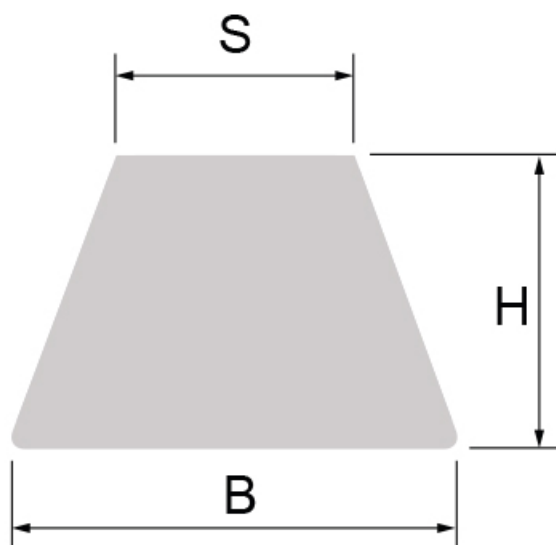
Highly flexible V-shaped notched PVC-profile running over pulleys with a specifically shaped groove.

Profiles are applied to the belt using hot air welding or glue.

Dimensions in mm.



General Data



Designation	Code	Material	B	H	S
K6	1	TPU	6	4	4
Kn8	2	TPU	8	5	5
Kn10	3	TPU	10	6	6

Designation	Weight (kg/m)	ø
K6	0.03	Min. 40
Kn8	0.04	Min. 40
Kn10	0.06	Min. 40

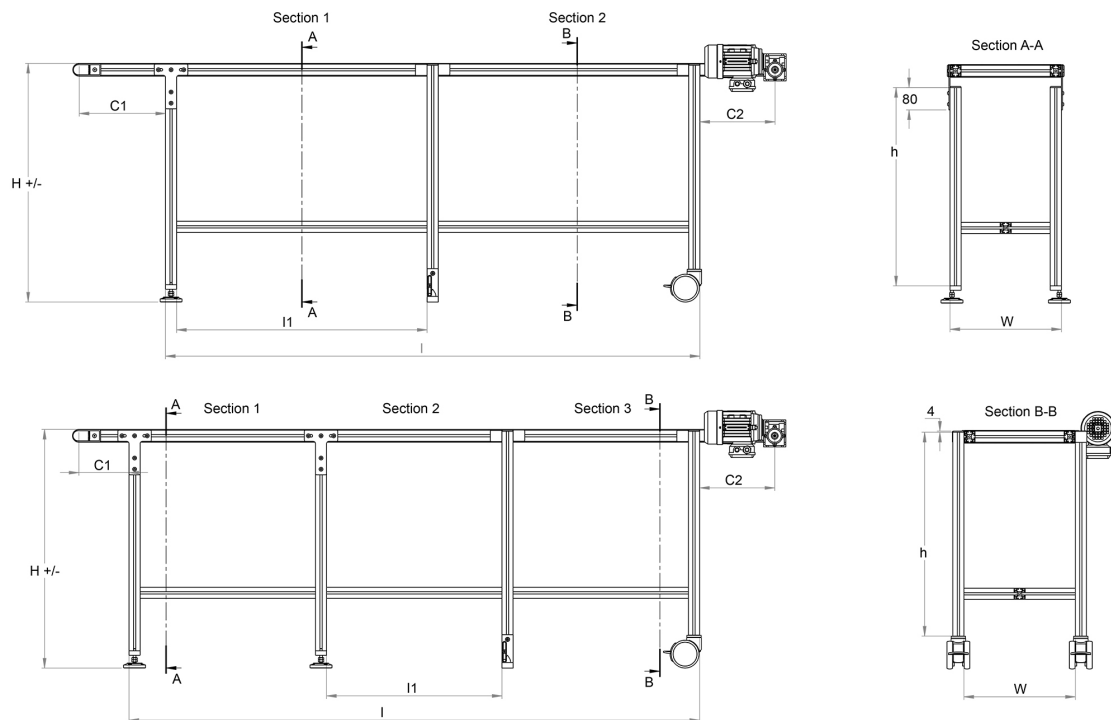
Conveyor Stands

We can provide stands for the belt conveyors. The stands are made from aluminium profiles, guaranteed 100% compatible with the conveyor and are made to order. Available with adjustable feet, fixable feet or wheels.

The stands can be fitted with various covers/hoods. Please contact us for further information.



General Data

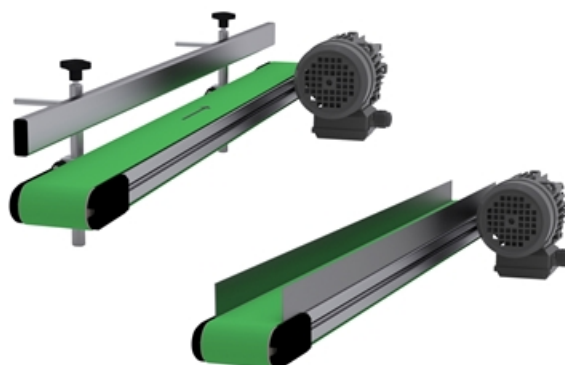


Designation	Remark
Conveyor stand	All stands are made to order. Contact us for information.

Conveyor Guides

Conveyor guides are ideal for diverting, accumulating or guiding goods. We have several solutions, examples include bent plates and additional adjustable guide profiles.

Dimensions in mm.



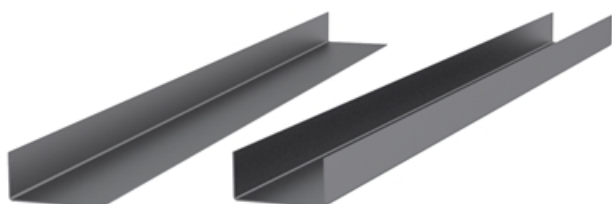
Adjustable Side Support



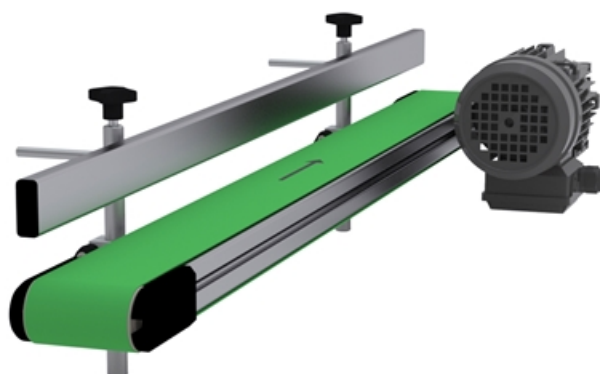
Side Support Alu



Bent Sides

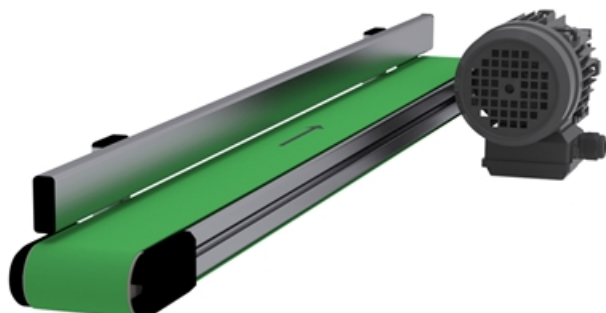


Adjustable Side Support

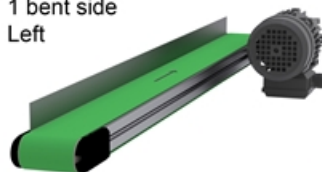


Conveyor Guides

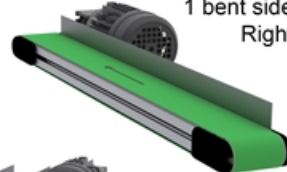
Side Support Alu



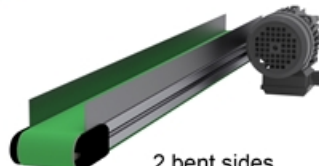
1 bent side
Left



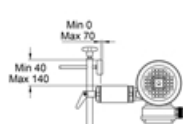
1 bent side
Right



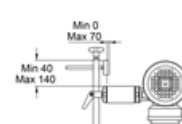
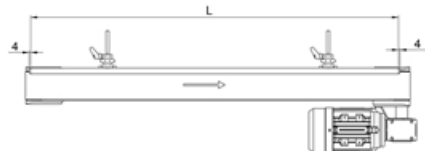
2 bent sides



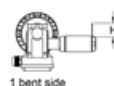
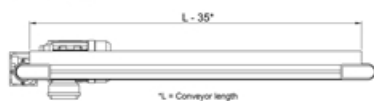
Adjustable Side Support



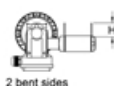
Side Support Alu



Bent sides



1 bent side



2 bent sides

General Data

Designation	Material	Remark
Adjustable Side Support	-	Made to order. Contact us for further information.
Side Support Alu	Aluminium. Available also with low friction plastic.	Made to order. Contact us for further information.
1 Bent Side	-	Made to order. Contact us for further information.
2 Bent Sides	-	Made to order. Contact us for further information.

Conveyor Belt Covers

We can provide various covers/hoods. Please contact us for further information.



General Data

Designation	Remark
Belt cover	Made to order. Contact us for further information.

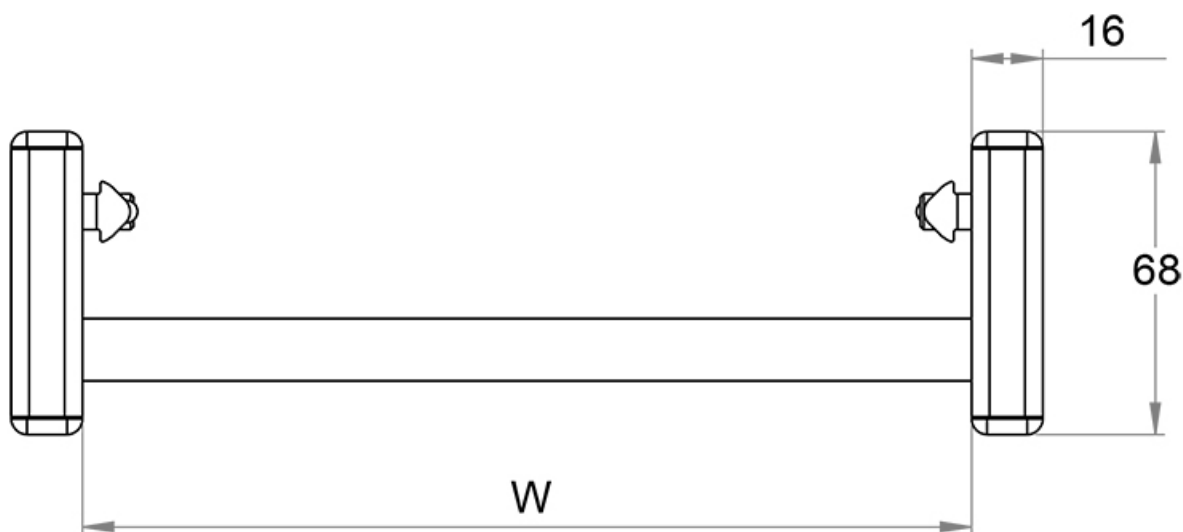
Support Kits

The support kits are used to take up belt slack. The kits are optional, but recommended. If no other request is made, they will be included with the conveyor, amount of kits depending on its length and type.

Dimensions in mm.



General Data



Designation	Remark
Support kit	Made to order. Contact us for further information.